

HDM's BFG Series Battery Fuel Gauge provides real-time information for 24VDC system battery performance via display, RS232, or CAN-Bus: State-of-Health, State-of-Charge, Hour Remaining, Battery Voltage, Current <sup>1</sup>, and Temperature <sup>1</sup>. Patented tracking algorithm with automatic calibration precisely determines the state of the battery and eliminates guess-work on reserve capacity. Available in standard or ruggedized waterproof version, the BFG Battery Fuel Gauge will accurately monitor your battery performance at sea and on the road.

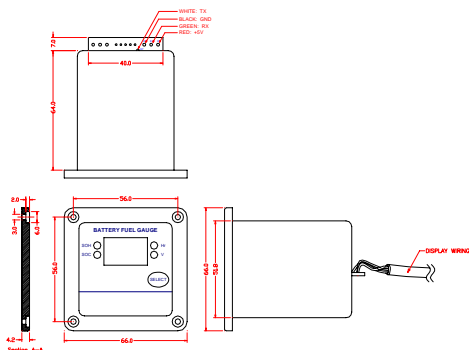
MODE	Mode 1: SOH (State of Health) <sup>2</sup>	95% Accuracy
	Mode 2: SOC (State of Charge) <sup>2</sup>	95% Accuracy
	Mode 3: Hr (Hour Remaining) <sup>2</sup>	90% Accuracy
	Mode 4: V (Battery Voltage)	97 ~ 99% Accuracy
ELECTRICAL	Nominal Voltage	24VDC
	Voltage Range	18 ~ 32VDC
	Shunt Value	(See Table)
	Quiescent Current Draw	Display: 25mADC Sensor: 5mADC
MECHANICAL	External Fuse	ATC 3A / 32VDC
	Sensor Box and DC Shunt	Mounted at the Battery Bank
	Dimensions (LxWxH)	Display (Panel): 66 x 66 x 5mm (2.6 x 2.6 x 0.2") Display (Base): 51mm (2") Dia x 64mm (2.5") Length Sensor: 104 x 76 x 108mm (4.1 x 3 x 4.3")
	Weight	0.54kg (1.2 lbs)
INTERF	Construction	Composite Plastic with Epoxy Filler
	Display	20" 18AWG/4C with Male Receptacle Connector
	Sensor (Display Interface)	40" 18AWG/4C with Female Plug Connector
	Sensor (To 24V Positive Connection)	40" 18AWG/2C with 3/8 Ring Terminal to 24V Battery Positive
ENVIRON	Data I/O Port	(Optional) 24" 18AWG/3C with DB-9 Female Connector
	Cooling	External Surface Cooling
	Operating Temperature	-40 ~ +60°C
	Storage Temperature	-40 ~ +85°C
	MTBF Prediction <sup>3</sup>	1.73 Mhrs

Specifications typical at 25°C unless otherwise stated and are subject to change without notice.

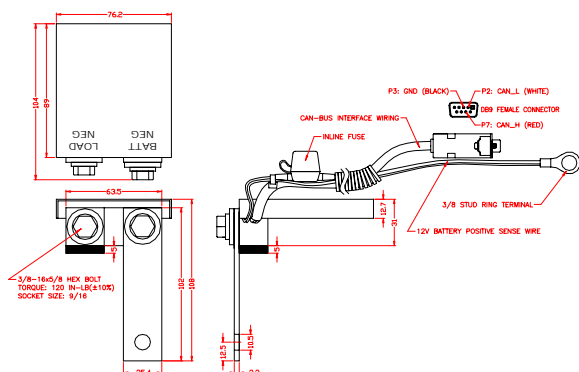
<sup>1</sup> Current and temperature data are retrieved through RS232 or CAN-Bus.

<sup>2</sup> Accuracy is achieved after 2 discharge/charge cycles.

<sup>3</sup> Calculated per Bellcore TR-NWT-000332 method. Products are covered by 1 year limited warranty.



BFG battery fuel gauge display. All dimensions in millimeters unless otherwise specified.



BFGS battery fuel gauge sensor with interface option. All dimensions in millimeters unless otherwise specified.

PB-BFG Series (24V) 20130725-1000



## INDUSTRY-LEADING FEATURES

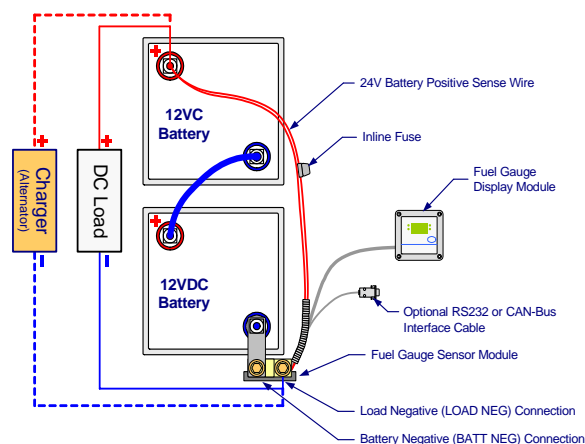
- ♦ Real-Time Battery Information Based On Continuous Data Measurement
- ♦ Self-Learn And Self-Calibration
- ♦ Load Dump And Voltage Transient Protection
- ♦ Push Button To Scroll Through Information Display
- ♦ User Friendly And Easy Installation
- ♦ Optional RS232 Or CAN-Bus Interface Provides Ability To Collect Data, Communicate Data, And Remote Reprogramming Of BFG Sensor
- ♦ SOL (State-Of-Life) Derive From Performance Trend
- ♦ NCR (# Of Cycles Remaining) For Predictive Battery Life

## RELIABLE AND PERTINENT INFORMATION

- ♦ Battery State-Of-Health
- ♦ Battery State-Of-Charge
- ♦ Hour Remaining
- ♦ Battery Voltage
- ♦ Current <sup>1</sup>
- ♦ Temperature <sup>1</sup>
- ♦ Provides System-Level Or Cell-Level Information

## APPLICABLE PERFORMANCE REQUIREMENTS

- ♦ Meets IP65 Requirement
- ♦ Ruggedization For MIL-STD-810G
- ♦ Compliancy For MIL-STD-1275E



Setup Configuration for BFG500-24 with optional RS232 or CAN-Bus Interface Connector

MODEL	SHUNT VALUE	VOLTAGE
BFG250-24	250ADC / 50mVDC	24VDC
BFG500-24	500ADC / 50mVDC	24VDC

Add Suffix After Model Name For Optional Accessories.

-D	Battery Fuel Gauge Display
-S	Battery Fuel Gauge Sensor (Include Interface Option)
-RS	Sensor With RS232 Interface Connector
-CAN	Sensor With CAN-Bus Interface Connector