

HDM's PS-3000-12-120 Pure Sine-Wave Inverter provides a superior AC source for your complex electrical and frequency sensitive equipment. It provides up to 3000W of continuous AC power for mobile and stationary applications such as satellite communication equipment, digital surveillance cameras, portable computers, and emergency medical equipment. Compact and ruggedized design, the PS-3000-12-120 inverter will ensure a clean and low distortion AC power at sea and on the road.

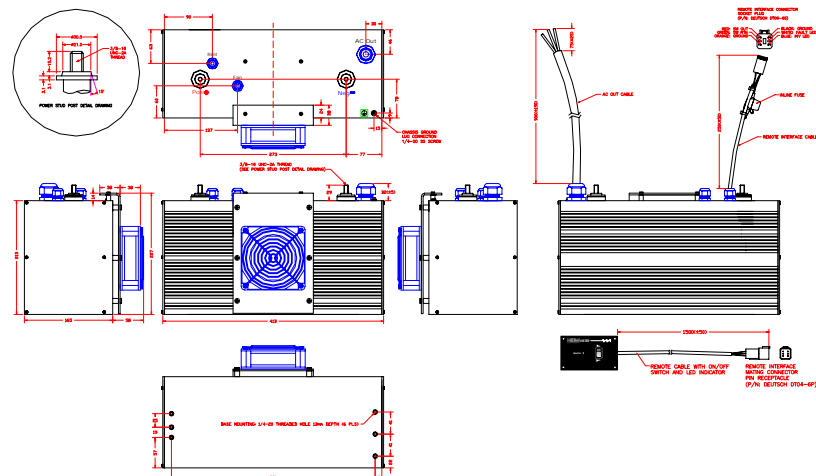
ELECTRICAL	DC Input Nominal Voltage	12VDC
	DC Input Voltage Range	11 ~ 15VDC
	DC Input Under Voltage Lockout	< 10.5VDC
	DC Input Over Voltage Protection	> 15.5VDC
	No Load Current Draw	
	ON state	2.5 ~ 5ADC @ 12VDC
	Sleep Mode	< 0.2ADC @ 12VDC
	AC Output Power ¹	3000W
	AC Output Surge Rating	6000W
	AC Output Waveform	Pure Sine-Wave
	AC Output Voltage	120VAC
	AC Output Frequency	60(±0.5%)Hz
	AC Output Voltage Regulation	±2% Vout
	Distortion (THD)	< 3%
	High Temperature Shutdown	≥ +85(±5)°C (Internal Threshold)
	High Temperature Auto-Recovery	+60(±5)°C (Internal Reset)
MECH	Sleep Mode	Iout < 0.3(±0.2)AAC for > 6 hours
	Efficiency	90% Typ
	Isolation (Input-Output)	1500VAC
	Battery Type	AGM, Flooded Lead Acid Batteries
INTERFACE	Dimensions (LxWxH")	16.3 x 8.8 x 9.5"
	Weight	37 lbs
	Construction	Extruded Aluminum Case
	DC Input Connection	3/8-16 Stud Terminals
ENVIRON	AC Output Connection	36" 10AWG/3C Cable (Unterminated)
	Remote Connection	12" 18AWG/6C with Deutsch DT06-6S Socket Plug
	Display And Control	64" 18AWG/6C with Deutsch DT04-6P Pin Receptacle
	Data I/O Port	n/a
ENVIRON	Cooling	Front Side Mounted External Waterproof Fan
	Operating Temperature	-40 ~ +65°C ¹
	Storage Temperature	-40 ~ +95°C
	MTBF Prediction ²	227,000 hrs

Specifications typical at 25°C unless otherwise stated and are subject to change without notice.

¹ Rated output power for PS-3000-12-120 will derate above +55°C ambient temperature.

² Calculated per Bellcore TR-NWT-000332 method at 50% stress, +40°C. Products are covered by 1 year limited warranty.

³ External DC input fuse required.



PS Inverter Module Shown with CAN-Bus Interface

INDUSTRY-LEADING FEATURES

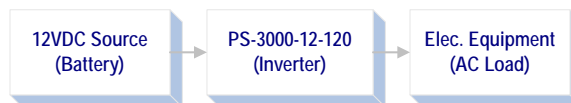
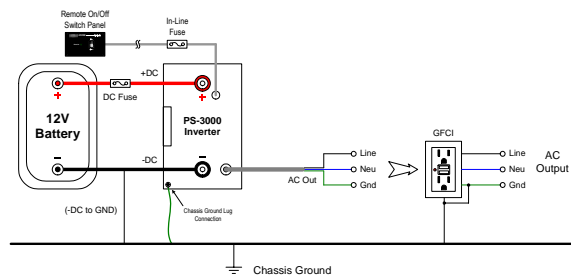
- ♦ High Power Density
- ♦ High Surge Capability
- ♦ Best Thermal Performance Without Derating ¹
- ♦ Watertight 3 PSI Standard Design
- ♦ Sleep Mode to Minimize Idling Drain Current (0.2ADC vs 3~5ADC)
- ♦ Multi-Staged Output Short Circuit Protection
- ♦ Load Dump and Voltage Transient Protection
- ♦ RS232 or CAN-Bus Interface (Optional)

OPERATIONAL & PROTECTION FEATURES

- ♦ Input Reverse Polarity Protection ³
- ♦ Input Low Voltage Shutdown
- ♦ Input Overvoltage Shutdown
- ♦ Output Over-Current Protection
- ♦ Output Short Circuit Protection
- ♦ Output Overvoltage Protection
- ♦ High Temperature Shutdown
- ♦ Auto-Recovery Function
- ♦ Sleep Mode

APPLICABLE PERFORMANCE REQUIREMENTS

- ♦ Meets IP65 Requirement
- ♦ Ruggedization for SAE J1455 Chassis Mount Components
- ♦ Compliance for ISO 7637-2 Electrical Transient



Connection Block Diagram for PS-3000-12-120

MODEL	OUTPUT POWER	SURGE POWER	INPUT/OUTPUT VOLTAGE
PS-3000-12-120	3,000W	6,000W	12VDC / 120VAC

Add suffix after model name for optional accessories.

-RS	RS232 Interface
-CAN	CAN-Bus Interface

Dimensions in millimeters unless otherwise specified.